
Reference: This service bulletin replaces the previous service bulletin SB 85-0017 from April 2001, which should be discarded.

Purpose: OP time corrected. SB 85-0017 is added.

Power seat, tilt-travel-forward function, repair

Background:

If the travel-forward function of the front seats is not responding when tilting the backrest forward, as when entering the rear seat, the repair procedure described in this service bulletin should be performed.

Model	Factory	Chassis No.
C70	J	

Materials

Description	Quantity	Part No.
Screw	1	969278
Spring	1	8616305

"Fixed Right --- First Time"

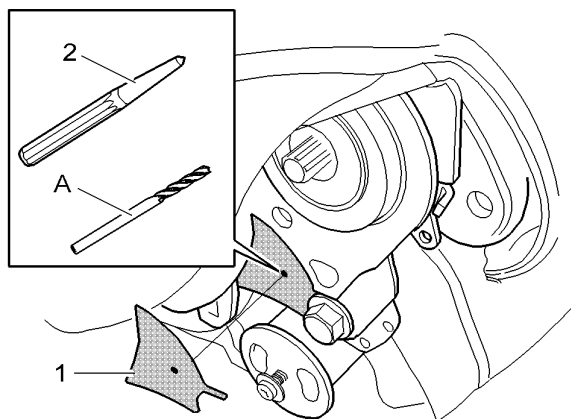
Service personnel: Please circulate, read and initial

Service Manager	Parts Manager	Workshop Manager	Workshop Foreman	Service Technicians							



Power seat, tilt-travel-forward function, repair

Power seat, tilt-travel-forward function, repair

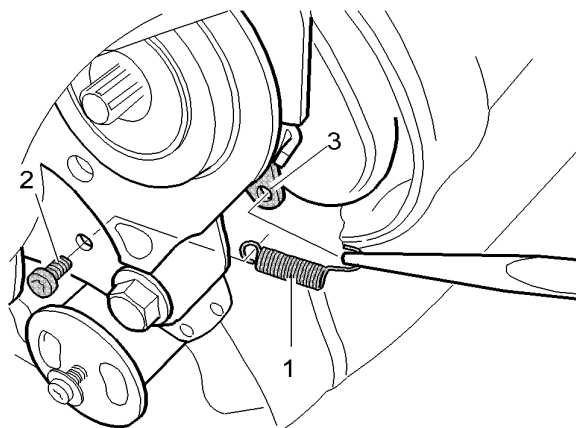


D8503881

Preparing the spring mounting

1

- Move the seat as far forward as possible.
- Raise the rear edge of the seat to the maximum position.
- Remove the control panel according to the method in VADIS.
- Fold up the upholstery to access the tilt mechanism.
- Make a template (1) for the side that is to be repaired. See step 3.
- Place the template on the tilt mechanism.
- Use a center punch (2) and transfer the mark in the center of the template to the tilt mechanism. Drill out the mark. Use a **3.5 mm (1/8")** drill bit (A).



D8503880

Installing the spring

2

- Place the round eyelet of the spring (1) on the screw (2).
- Hold the spring in place and install the screw into the hole drilled in the tilt mechanism.
- Tighten screw so that it holds spring securely.
- Secure the other end of the spring in the hole (3) in the tilt mechanism.
- Check the function of the tilt mechanism.
- Reinstall the control panel.

Template

LH = Left-hand side

RH = Right-hand side

Copy the template.

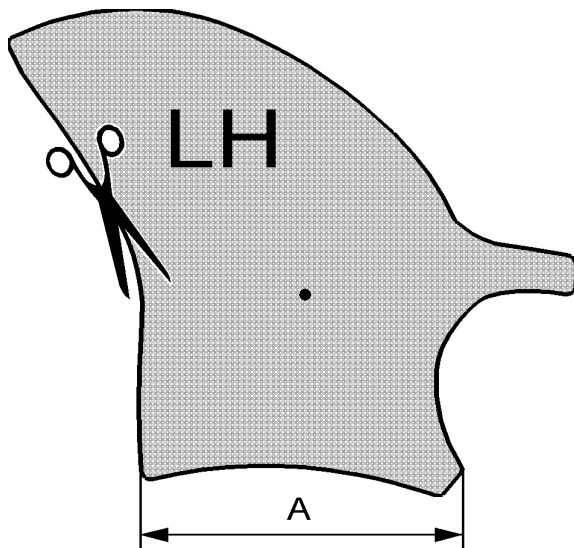
Check that the dimension (A) is **34 mm**.

Note! Due to tolerances in reproduction of this document the template may not be the exact size. Measurement (A) should be **34 mm (1 11/32")**. This can be corrected by enlarging the template in a copying machine.

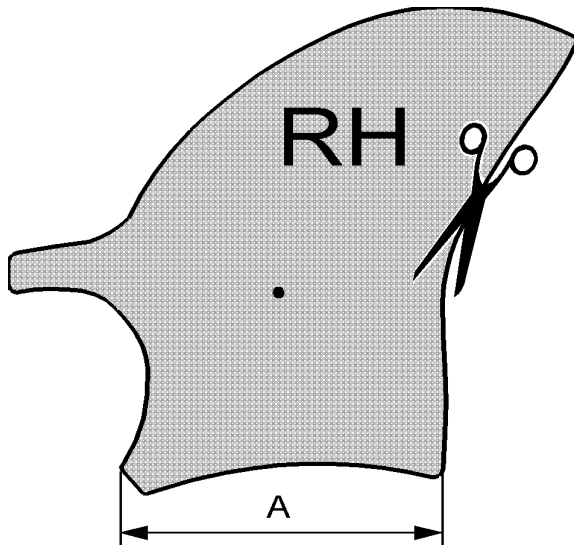
Check that the enlarged template measures **34 mm (1 11/32")**, adjust copier if necessary to achieve correct size.

Cut out the template.

Check that the template aligns with the tilt mechanism. See the illustration in step 1.



D8503884



D8503885

WARRANTY STATEMENT: Claims may be submitted under the New Car Warranty when there is a documented customer complaint, using claim type 01.

Operation No.	Labor description	Time allowance
85941-2	Power front seat, tilting function, adjustment	0.3 hr